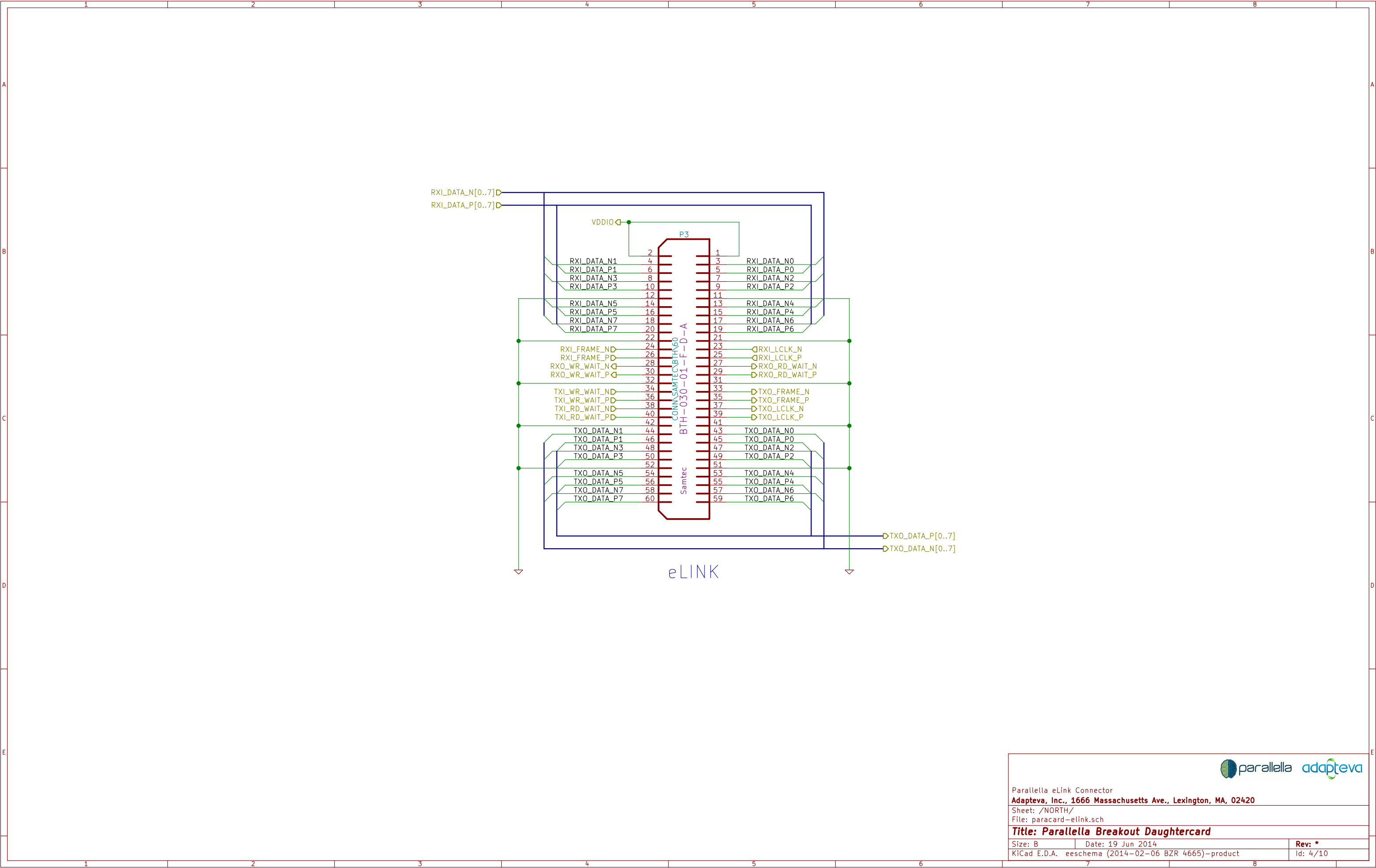


Parallella GPIO Connector
Adapteva, Inc., 1666 Massachusetts Ave., Lexington, MA, 02420
Sheet: /GPIO/
File: paracard-gpio.sch

Title: Parallella Breakout Daughtercard

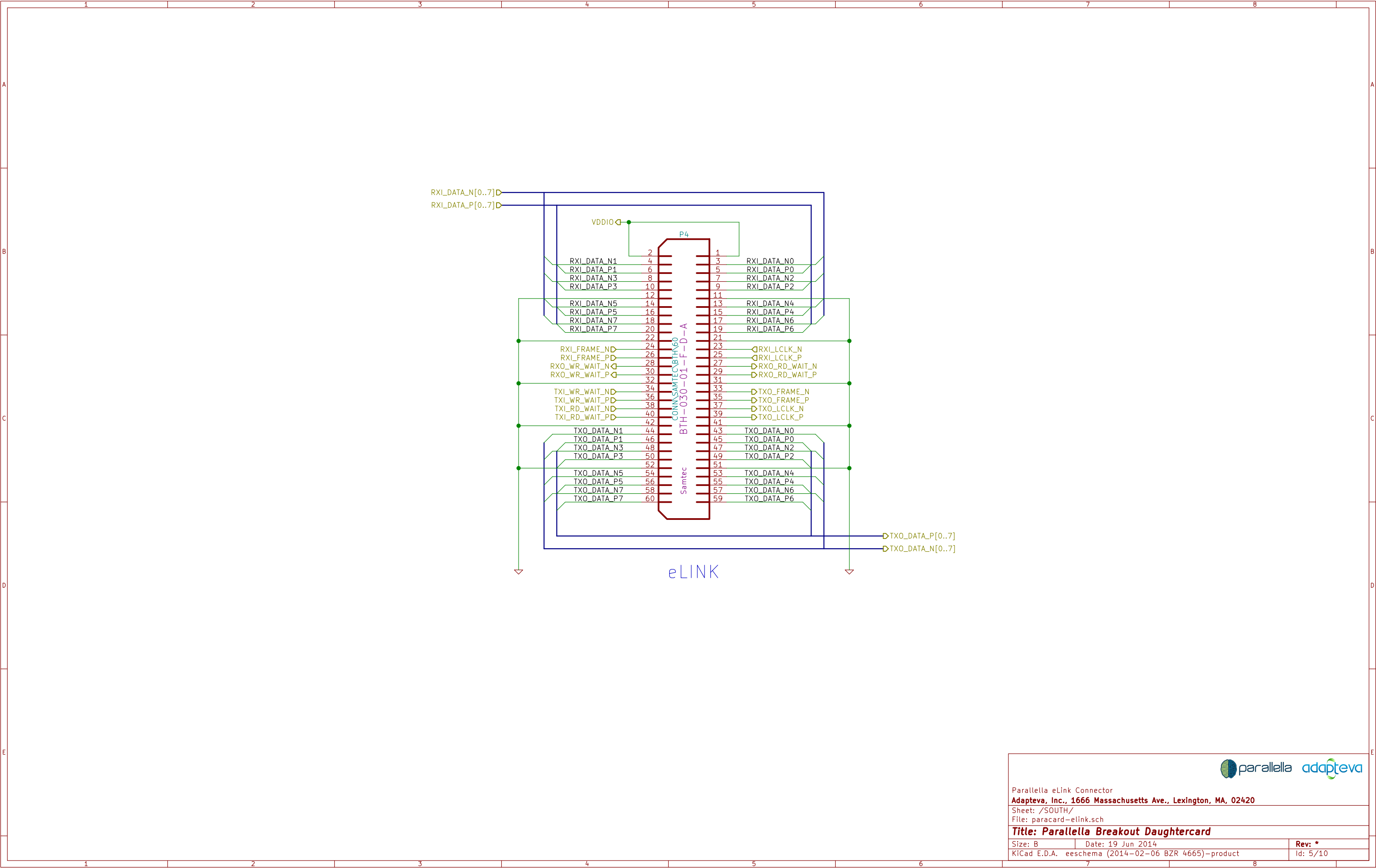
Size: B	Date: 19 Jun 2014	Rev: *
KiCad E.D.A. eeschema (2014-02-06 BZR 4665)-product		Id: 3/10



Parallella eLink Connector
Adapteva, Inc., 1666 Massachusetts Ave., Lexington, MA, 02420
Sheet: /NORTH/
File: paracard-elink.sch

Title: Parallella Breakout Daughtercard

Size: B	Date: 19 Jun 2014	Rev: *
KiCad E.D.A. eeschema (2014-02-06 BZR 4665)-product		Id: 4/10



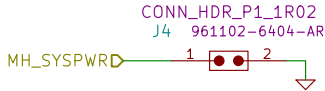
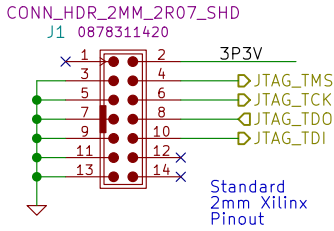
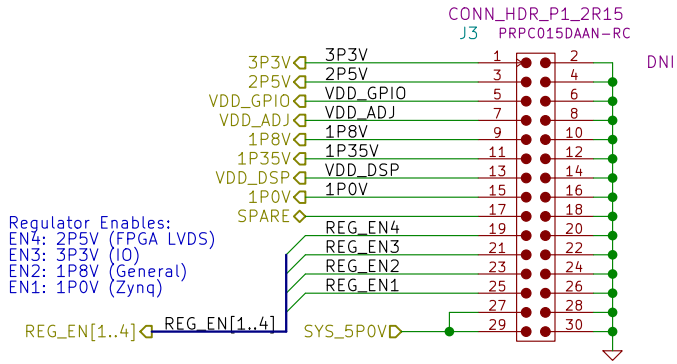
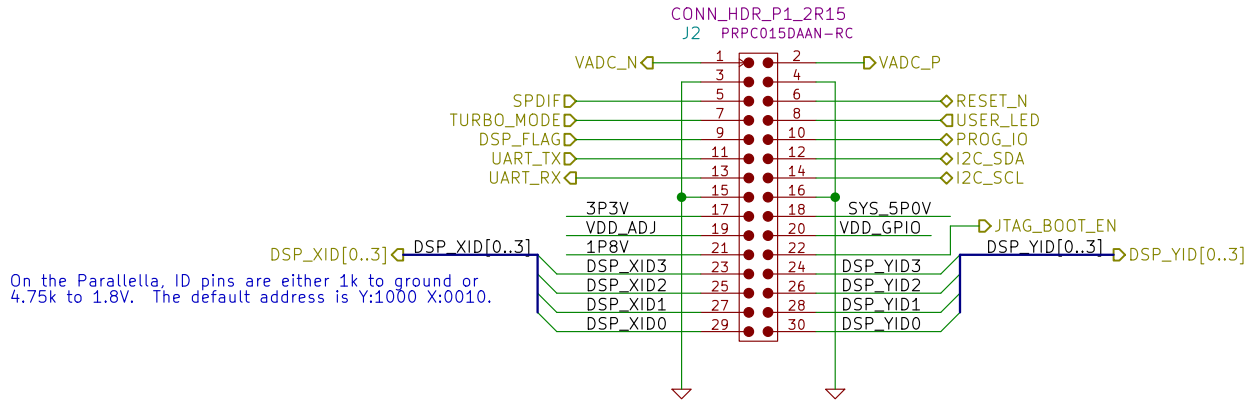
Parallella eLink Connector
Adapteva, Inc., 1666 Massachusetts Ave., Lexington, MA, 02420
Sheet: /SOUTH/
File: paracard-elink.sch

Title: Parallella Breakout Daughtercard

Size: B	Date: 19 Jun 2014	Rev: *
KiCad E.D.A. eeschema (2014-02-06 BZR 4665)-product		Id: 5/10



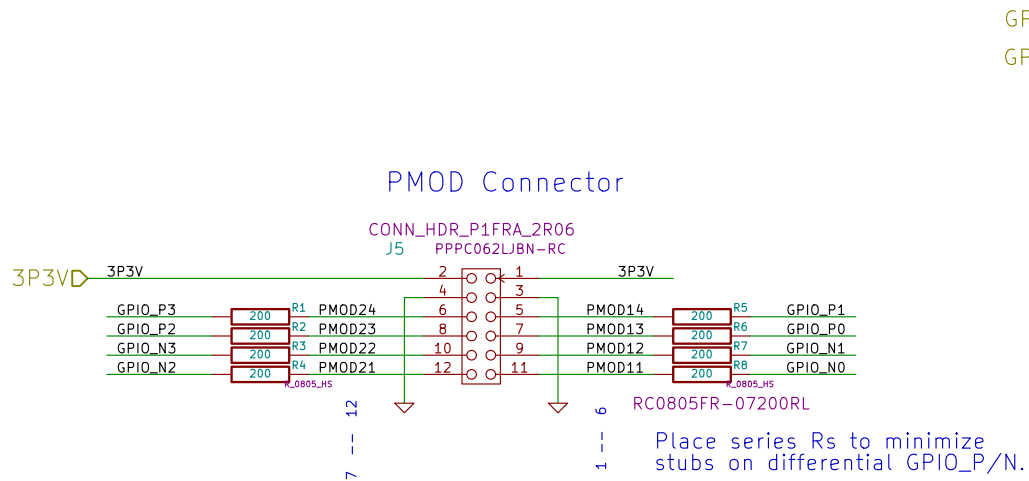
Mounting Holes		
Adapteva, Inc., 1666 Massachusetts Ave., Lexington, MA, 02420		
Sheet: /MountingHoles/		
File: paracard-mtg.sch		
Title: Parallella Breakout Daughtercard		
Size: B	Date: 19 Jun 2014	Rev: *
KiCad E.D.A. eeschema (2014-02-06 BZR 4665)-product		Id: 6/10



Various Power connectors and Jumpers
including JTAG
Adapteva, Inc., 1666 Massachusetts Ave., Lexington, MA, 02420
Sheet: /P_POWER/
File: porcu-power.sch

Title: Parallella Breakout Daughtercard

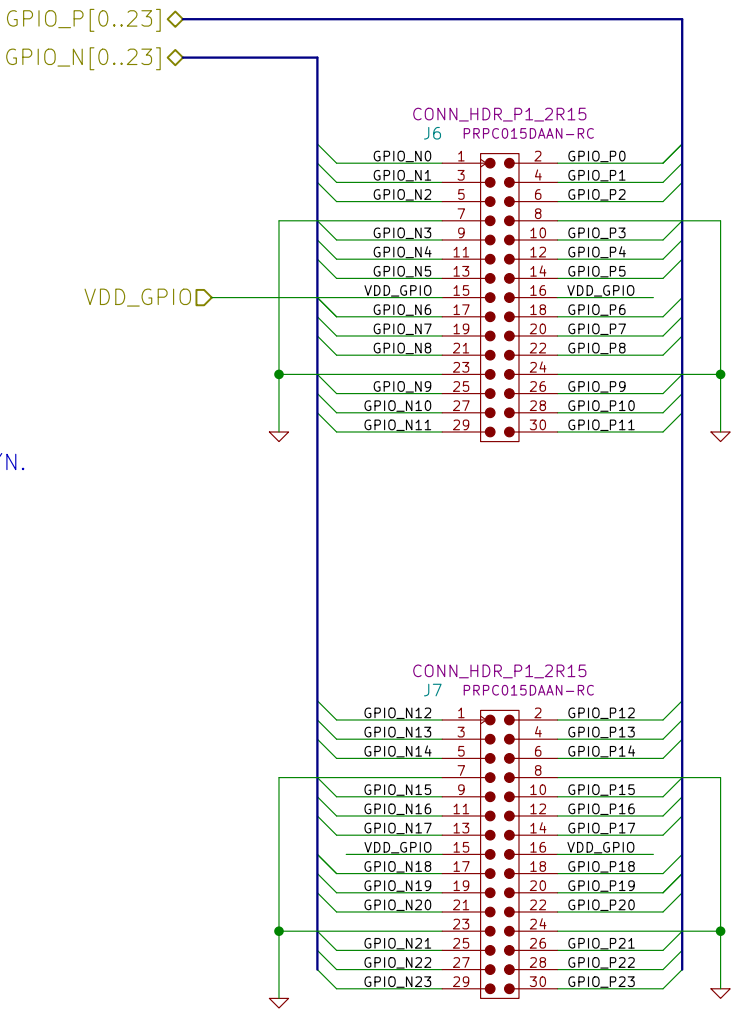
Size: B	Date: 19 Jun 2014	Rev: *
KiCad E.D.A. eeschema (2014-02-06 BZR 4665)-product		Id: 7/10



NOTE: Pin numbering for PMODs is non-standard. The numbering looking into the host (female) connector:

STD	1	3	5	7	9	11
PMOD	6	5	4	3	2	1
PMOD	12	11	10	9	8	7
STD	2	4	6	8	10	12

NOTE:
GPIO assignments are made to facilitate differential signaling (e.g. twisted-pair). For single-ended GPIOs, the assignments are as follows:



0 2
1 3
4 6

5 7
8 10
9 11

12 14
13 15
16 18

17 19
20 22
21 23

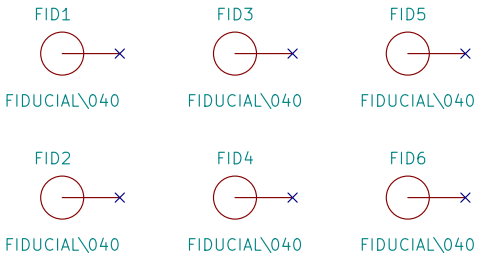
24 26
25 27
28 30

29 31
32 34
33 35

36 38
37 39
40 42

41 43
44 46
45 47

Global Fiducial Markers Top / Bottom

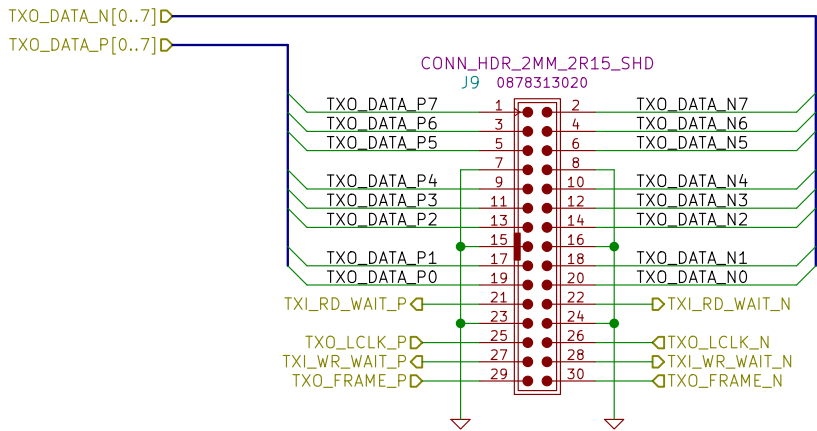
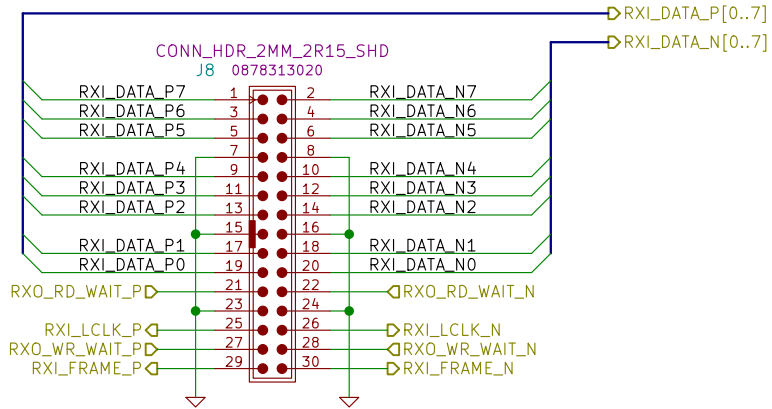


GPIO Connectors
Adapteva, Inc., 1666 Massachusetts Ave., Lexington, MA, 02420
Sheet: /P_GPIO/
File: porcu-gpio.sch

Title: Parallella Breakout Daughtercard

Size: B Date: 19 Jun 2014 Rev: *
KiCad E.D.A. eeschema (2014-02-06 BZR 4665)-product Id: 8/10

Use Molex 0875683093
as IDT mating connector.



Use Molex 0875683093
as IDT mating connector.

